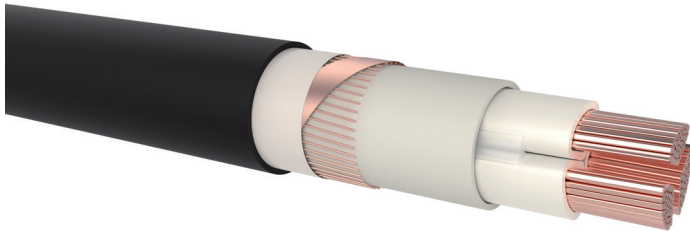


6-CYKCY

PVC/PVC copper underground cable, screened

DESIGN



- 1 | Copper conductor, round stranded (RM) resp. sector-shaped stranded (SM)
- 2 | Core insulation (PVC)
- 3 | Inner covering (EPDM or plastic tape)
- 4 | Inner sheath (PVC colorless)
- 5 | Screen (copper tape or bare copper wires applied with changing direction of lay)
- 6 | Inner covering (plastic tape)
- 7 | Sheath (PVC black, UV-resistant)

APPLICATION

The cables are designed for fixed distribution of electricity in the ground or in the outdoor environment.

TECHNICAL DATA



Standard:
TP PRAKAB 03/08



Rated voltage:
3,6/6 kV



Test voltage:
core / core 15 kV / 50 Hz



Temperature range:
 laying temperature: min. -5 °C
 operating temperature: -50 °C up to 70 °C
 conductor temperature: max. 70 °C
 short circuit temperature: max. 160 °C/5 s
 (≤300 mm²)
 max. 140 °C/5 s
 (>300 mm²)



Bending radius (min.):
 6 x Ø up to 20 mm
 12 x Ø of cable for Ø from 20 mm up to 40 mm
 15 x Ø over 50 mm



Core identification:
Natural cores colour



Fire properties:
 ČSN EN 60332-1-2: self-extinguishing
 CPR classification: E_{ca}



Certificate:
EZÚ Czech Republic

Number of cores x nominal cross-section (mm ²)	Max. conductor resistance (Ω/km)	Current rating in the earth (A)	Current rating in the air (A)	Outer diameter (mm) appr.	Total weight (kg/km) appr.	Standard lengths / packing
6-CYKCY						
1 x 25 RM/16	0.727	117	105	23.0	921	1000 D
3 x 25 RM/16	0.727	88	71	36.7	2273	1000 D
1 x 35 RM/16	0.524	147	135	24.3	1079	1000 D
3 x 35 RM/16	0.524	118	99	38.8	2665	1000 D
1 x 50 RM/16	0.387	173	163	26.2	1309	1000 D
3 x 50 RM/16	0.387	143	119	41.8	3231	1000 D
1 x 70 RM/16	0.268	212	205	25.9	1283	1000 D
3 x 70 SM/16	0.268	176	150	41.3	3168	1000 D
3 x 70 SM/50	0.268	176	150	43.7	3472	1000 D
1 x 95 RM/16	0.193	252	250	28.0	1657	1000 D
1 x 95 RM/25	0.193	252	250	29.2	1757	1000 D
3 x 95 SM/16	0.193	211	182	44.8	4098	1000 D
1 x 120 RM/25	0.153	286	290	30.5	2016	1000 D

6-CYKCY

PVC/PVC copper underground cable, screened

Number of cores x nominal cross-section (mm ²)	Max. conductor resistance (Ω/km)	Current rating in the earth (A)	Current rating in the air (A)	Outer diameter (mm) appr.	Total weight (kg/km) appr.	Standard lengths / packing
6-CYKCY						
3 x 120 SM/25	0.153	240	210	48.5	4982	1000 D
1 x 150 RM/25	0.124	314	327	32.0	2310	1000 D
3 x 150 SM/16	0.124	269	238	50.0	5744	1000 D
3 x 150 SM/25	0.124	269	238	51.3	5855	1000 D
1 x 185 SM/25	0.0991	354	376	32.8	2789	1000 D
3 x 185 SM/16	0.0991	305	273	52.7	6889	1000 D
3 x 185 SM/25	0.0991	305	273	54.0	6993	1000 D
1 x 240 RM/25	0.0754	406	443	36.1	3273	1000 D
3 x 240 SM/25	0.0754	354	323	58.0	8705	500 D
1 x 300 RM/25	0.0601	452	503	38.3	3883	1000 D
1 x 400 RM/25	0.047	499	573	41.5	4724	1000 D
1 x 500 RM/35	0.0366	560	659	45.7	5883	500 D

Technical changes reserved. All figures are therefore without guarantee.

10.11.2022, 20:32