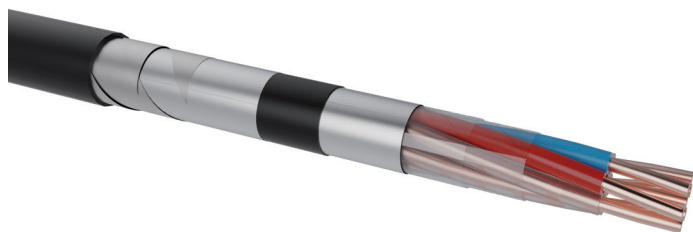


BRQKAtQAhVQ

PE/PE Signalling cable, screened, armoured, protected against interference

DESIGN



- 1 | Copper conductor, round solid (RE)
- 2 | Core insulation (PE), cores stranded in layers
- 3 | Inner covering (plastic tape)
- 4 | Screen (PE laminated aluminium tape)
- 5 | Sheath (PE, black)
- 6 | Screen (bare aluminium tape)
- 7 | Armouring (two layers galvanized steel tapes)
- 8 | Sheath (PE black, UV-resistant)

APPLICATION

Ground cables of railway signalling equipment with metallic conductors which can be used in communication, power and signalling equipment

TECHNICAL DATA



Standard:
MÁV. Standard P-12440/2002, P-3196/2008



Test voltage:
core / core 2000 Veff / 50 Hz
screen / defence layer 3000 Veff / 50 Hz



Temperature range:
laying temperature: min. -10 °C
operating temperature: -40 °C up to 70 °C



Bending radius (min.):
12 x Ø of cable



Core identification:
Transparent, with tracer (red) and direction (blue) core in each layer

Electrical Properties

Conductor diameter	(mm)	1.5
Conductor resistance, max.	(Ω/km)	10.03
Insulation resistance, min. core/screen	(MΩ.km)	10000
Insulation resistance, min. screen/armouring	(MΩ.km)	5000
Reduction factor at 50 Hz, 10 to 250 V/km acc. amendment P-3196/2008	(-)	2 to 14 wires ≤ 0.7 21 to 37 wires ≤ 0.6 48 to 91 wires ≤ 0.5

Number of cores x element x nominal diameter (mm)	Outer diameter (mm) appr.	Total weight (kg/km) appr.	Standard lengths / packing
BRQKAtQAhVQ			
2 x 1 x 1.5	15.9	326	1000 D
4 x 1 x 1.5	16.9	395	1000 D
7 x 1 x 1.5	18.4	491	1000 D
10 x 1 x 1.5	20.9	619	1000 D
14 x 1 x 1.5	21.9	719	500 D, 1000 D
21 x 1 x 1.5	24.6	933	500 D, 1000 D
30 x 1 x 1.5	27.4	1174	500 D, 1000 D
37 x 1 x 1.5	28.9	1342	500 D, 1000 D
48 x 1 x 1.5	31.8	1639	500 D, 1000 D
61 x 1 x 1.5	33.9	1952	500 D, 1000 D
75 x 1 x 1.5	37.2	2312	500 D
91 x 1 x 1.5	39.3	2686	500 D