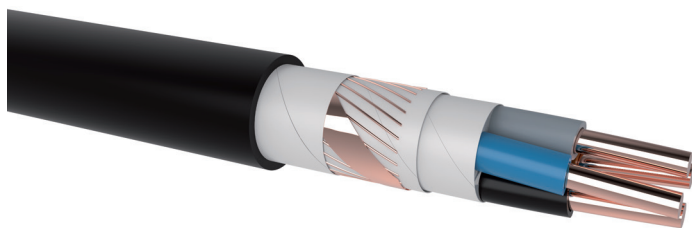


MCMK

PVC/PVC copper energy cables, screened

DESIGN



- 1 | Copper conductor, round solid (RE), round stranded (RM) resp. sector-shaped stranded (SM)
- 2 | Core insulation (PVC)
- 3 | Inner covering (plastic tape)
- 4 | Inner covering (plastic tape)
- 5 | Concentric screen (bare copper wires) and counter helix (copper tape) and plastic tape
- 6 | Sheath (PVC black, UV-resistant)

APPLICATION

Power distribution cables in power stations, industrial installations and switch gears, as well as in local mains. For fixed installation under ground, in interior premises, cable ducts, in the open air and in water – as permitted by the local building regulations – if protection against shock hazard in the event of mechanical damage or electrical screening is required.

TECHNICAL DATA



Standard:
HD 603.3F SFS 4880



Rated voltage:
0.6/1 kV



Test voltage:
core / core 4 kV / 50 Hz



Temperature range:
laying temperature: min. -15 °C
operating temperature: -30 °C up to 70 °C
conductor temperature: max. 70 °C
short circuit temperature: max. 160 °C/5 s



Bending radius (min.):
12 x Ø of cable



Core identification:
HD 308 S2



Fire properties:
EN 60332-1-2: flame retardant

Number of cores x nominal cross-section (mm ²)	Max. conductor resistance (Ω/km)	Current rating in the earth (A)	Current rating in the air (A)	Outer diameter (mm) appr.	Total weight (kg/km) appr.	Standard lengths / packing
MCMK						
2 x 1.5 RE/1.5	12.1	26	18.5	13.5	240	1000 D
3 x 1.5 RE/1.5	12.1	26	18.5	14.0	260	1000 D
4 x 1.5 RE/1.5	12.1	26	18.5	14.5	295	1000 D
2 x 2.5 RE/2.5	7.41	35	25.0	14.0	285	1000 D
3 x 2.5 RE/2.5	7.41	35	25.0	15.0	315	1000 D
4 x 2.5 RE/2.5	7.41	35	25.0	15.5	365	1000 D
2 x 4 RE/4	4.61	52	36.0	16.1	412	1000 D
3 x 4 RE/4	4.61	45	32.0	17.1	435	1000 D
4 x 4 RE/4	4.61	45	32.0	17.1	455	1000 D
2 x 6 RE/6	3.08	57	43.0	17.5	480	1000 D
3 x 6 RE/6	3.08	57	43.0	18.5	545	1000 D
4 x 6 RE/6	3.08	57	43.0	19.5	635	1000 D
2 x 10 RE/10	1.83	77	60.0	19.5	640	1000 D
3 x 10 RE/10	1.83	77	60.0	20.5	745	1000 D
4 x 10 RE/10	1.83	77	60.0	22.0	875	1000 D
4 x 10 RM/10	1.83	77	60.0	23.4	915	1000 D
2 x 16 RE/16	1.15	115	79.0	19.0	905	1000 D

MCMK

PVC/PVC copper energy cables, screened

Number of cores x nominal cross-section (mm ²)	Max. conductor resistance (Ω/km)	Current rating in the earth (A)	Current rating in the air (A)	Outer diameter (mm) appr.	Total weight (kg/km) appr.	Standard lengths / packing
MCMK						
3 x 16 RE/16	1.15	100	80.0	22.5	1020	1000 D
4 x 16 RE/16	1.15	100	80.0	24.0	1220	1000 D
4 x 16 RM/16	1.15	100	80.0	25.3	1265	1000 D
2 x 25 RM/16	0.727	130	102.0	25.8	1448	1000 D
3 x 25 RM/16	0.727	130	102.0	26.5	1560	1000 D
4 x 25 RM/16	0.727	130	102.0	28.5	1890	1000 D
3 x 35 RM/16	0.524	160	126.0	29.5	1820	1000 D
4 x 35 RM/16	0.524	160	126.0	28.0	1820	1000 D
3 x 50 SM/25	0.387	190	153.0	27.5	1960	1000 D
4 x 50 SM/25	0.387	190	153.0	31.5	2520	1000 D
3 x 70 SM/35	0.268	240	195.0	31.5	2680	500 D
4 x 70 SM/35	0.268	240	195.0	36.5	3450	500 D
3 x 95 SM/50	0.193	285	236.0	35.5	3590	500 D
4 x 95 SM/50	0.193	285	236.0	41.5	4590	500 D
3 x 120 SM/70	0.153	325	274.0	38.5	4500	500 D
4 x 120 SM/70	0.153	325	274.0	45.0	5760	500 D
3 x 150 SM/41	0.124	325	298.0	42.1	5345	500 D
3 x 150 SM/70	0.124	370	317.0	42.5	5370	500 D
4 x 150 SM/70	0.124	370	317.0	49.5	6920	500 D
3 x 185 SM/95	0.0991	420	361.0	47.5	6830	500 D
4 x 185 SM/95	0.0991	420	361.0	55.5	8760	500 D
3 x 240 SM/120	0.0754	480	427.0	52.5	8740	500 D
4 x 240 SM/120	0.0754	480	427.0	62.0	11420	500 D
3 x 300 SM/150	0.0601	550	492.0	58.0	10880	500 D
4 x 300 SM/150	0.0601	550	492.0	68.5	14010	500 D

Technical changes reserved. All figures are therefore without guarantee.