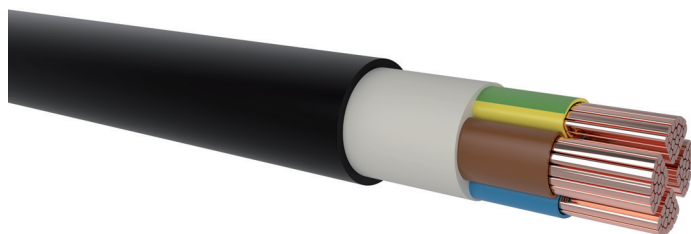


## N2XY

XLPE/PVC copper energy cable

### DESIGN



- 1 | Copper conductor, round solid (RE), round stranded (RM) resp. sector-shaped stranded (SM)
- 2 | Core insulation (XLPE)
- 3 | Inner covering (EPDM)
- 4 | Sheath (PVC black, UV-resistant)

### APPLICATION

Power distribution cable for power stations, industrial facilities and switching stations as well as for local power networks. For fixed installation indoors, in cable ducts, outdoors and in water, according to the applicable erection standards, if no risk of any mechanical damage is to be expected.

### TECHNICAL DATA



**Standard:**  
DIN VDE 0276-603 (HD 603)



**Rated voltage:**  
0.6/1 kV



**Test voltage:**  
core / core                      4 kV / 50 Hz



**Temperature range:**  
laying temperature:            min. -5 °C  
operating temperature:        -50 °C up to 90 °C  
conductor temperature:        max. 90 °C  
short circuit temperature:      max. 250 °C/5 s



**Bending radius (min.):**  
12 x Ø of cable (single core)  
15 x Ø of cable (multi core)



**Core identification:**  
HD 308 S2



**Fire properties:**  
EN 60332-1-2: flame retardant  
CPR classification:              E<sub>ca</sub>



**Certificate:**  
VDE Germany

Number of cores x nominal cross-section (mm <sup>2</sup> )	Max. conductor resistance (Ω/km)	Current rating in the earth (A)	Current rating in the air (A)	Outer diameter (mm) appr.	Total weight (kg/km) appr.	Standard lengths / packing
<b>N2XY</b>						
2 x 1.5 RE	12.1	31	24	13.2	236	1000 D
3 x 1.5 RE	12.1	31	24	13.7	258	1000 D
4 x 1.5 RE	12.1	31	24	14.4	288	1000 D
2 x 2.5 RE	7.41	40	32	14.0	276	1000 D
3 x 2.5 RE	7.41	40	32	14.5	306	1000 D
4 x 2.5 RE	7.41	40	32	15.3	348	1000 D
2 x 4 RE	4.61	52	42	14.9	326	1000 D
3 x 4 RE	4.61	52	42	15.5	369	1000 D
4 x 4 RE	4.61	52	42	16.4	424	1000 D
2 x 6 RE	3.08	64	53	15.8	391	1000 D
3 x 6 RE	3.08	64	53	16.5	450	1000 D
4 x 6 RE	3.08	64	53	17.5	525	1000 D
2 x 10 RE	1.83	86	74	17.6	523	1000 D
3 x 10 RE	1.83	86	74	18.5	618	1000 D
4 x 10 RE	1.83	86	74	19.7	735	1000 D

## N2XY

XLPE/PVC copper energy cable

Number of cores x nominal cross-section (mm <sup>2</sup> )	Max. conductor resistance (Ω/km)	Current rating in the earth (A)	Current rating in the air (A)	Outer diameter (mm) appr.	Total weight (kg/km) appr.	Standard lengths / packing
<b>N2XY</b>						
1 x 16 RM	1.15	176	131	10.7	238	1000 D
4 x 16 RM	1.15	112	98	22.5	1039	1000 D
1 x 25 RM	0.727	229	177	12.3	341	1000 D
4 x 25 RM	0.727	145	133	26.2	1506	1000 D
1 x 35 RM	0.524	275	217	13.3	438	1000 D
4 x 35 RM	0.524	174	162	28.8	1941	1000 D
1 x 50 RM	0.387	326	265	14.8	566	1000 D
4 x 50 SM	0.387	206	197	29.9	2300	1000 D
1 x 70 RM	0.268	400	336	16.7	775	1000 D
4 x 70 SM	0.268	254	250	33.9	3200	1000 D
1 x 95 RM	0.193	480	415	18.4	1026	1000 D
4 x 95 SM	0.193	305	308	38.2	4243	500 D
1 x 120 RM	0.153	548	485	19.9	1263	500 D
4 x 120 SM	0.153	348	359	41.8	5269	500 D
1 x 150 RM	0.124	616	557	21.8	1538	500 D
4 x 150 SM	0.124	392	412	47.0	6464	500 D
1 x 185 RM	0.0991	698	646	23.9	1896	500 D
4 x 185 SM	0.0991	444	475	52.3	8005	500 D
1 x 240 RM	0.0754	815	774	26.5	2438	500 D
4 x 240 SM	0.0754	517	564	58.0	10303	500 D
1 x 300 RM	0.0601	927	901	29.2	3025	500 D
1 x 400 RM	0.047	1064	1060	32.9	3840	500 D
1 x 500 RM	0.0366	1227	1252	36.7	4890	500 D
1 x 630 RM	0.0283	1421	1486	41.1	6261	500 D

Technical changes reserved. All figures are therefore without guarantee.