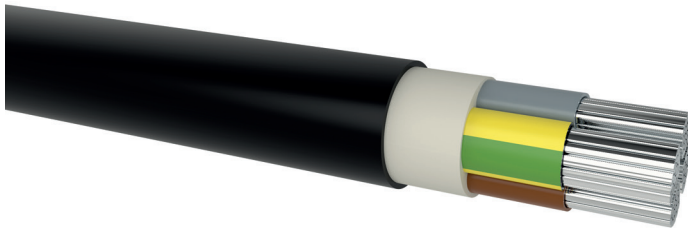


NAYY

PVC/PVC aluminium energy cables

DESIGN



- 1 | Aluminium conductor, round solid (RE), sector-shaped solid (SE), round stranded (RM), resp. sector-shaped stranded (SM)
- 2 | Core insulation (PVC)
- 3 | Inner covering (EPDM)
- 4 | Sheath (PVC black, UV-resistant)

APPLICATION

The cables are designed for distribution of electrical energy in fixed installation in the ground, cable ducts and in the external environment.

TECHNICAL DATA



Standard:
DIN VDE 0276-603 (HD 603)



Rated voltage:
0.6/1 kV



Test voltage:
core / core 4 kV / 50 Hz



Temperature range:
 laying temperature: min. -5 °C
 operating temperature: -50 °C up to 70 °C
 conductor temperature: max. 70 °C
 short circuit temperature: max. 160 °C/5 s
 (≤300 mm²)
 max. 140 °C/5 s
 (>300 mm²)



Bending radius (min.):
 15 x Ø of cable (single core)
 12 x Ø of cable (multi core)



Core identification:
HD 308 S2



Fire properties:
 EN 60332-1-2: self-extinguishing
 CPR classification: E_{ca}



Certificate:
 EZÚ Czech Republic
 VDE Germany

Number of cores x nominal cross-section (mm ²)	Max. conductor resistance (Ω/km)	Current rating in the earth (A)	Current rating in the air (A)	Outer diameter (mm) appr.	Total weight (kg/km) appr.	Standard lengths / packing
NAYY						
1 x 25 RM	1.2	160	110	12.6	210	500 D, 1000 D
4 x 25 RE	1.2	102	82	25.5	990	1000 D
4 x 25 RM	1.2	102	82	26.7	1040	1000 D
1 x 35 RM	0.868	193	135	13.6	260	500 D, 1000 D
4 x 35 RE	0.868	123	100	27.8	1130	1000 D
4 x 35 RM	0.868	123	100	29.3	1180	1000 D
1 x 50 RM	0.641	230	166	15.3	335	500 D, 1000 D
4 x 50 SE	0.641	144	119	31.9	1300	1000 D
4 x 50 SM	0.641	144	119	34.4	1360	1000 D
1 x 70 RM	0.443	283	210	16.9	425	500 D, 1000 D
4 x 70 SE	0.443	179	152	36.1	1740	1000 D
4 x 70 SM	0.443	179	152	38.0	1820	1000 D
1 x 95 RM	0.32	340	259	19.1	540	500 D, 1000 D

NAYY

PVC/PVC aluminium energy cables

Number of cores x nominal cross-section (mm ²)	Max. conductor resistance (Ω/km)	Current rating in the earth (A)	Current rating in the air (A)	Outer diameter (mm) appr.	Total weight (kg/km) appr.	Standard lengths / packing
NAYY						
4 x 95 SE	0.32	215	186	40.3	2240	1000 D
4 x 95 SM	0.32	215	186	43.0	2340	1000 D
1 x 120 RM	0.253	389	302	20.6	610	500 D, 1000 D
4 x 120 SE	0.253	245	216	43.5	2660	1000 D
4 x 120 SM	0.253	245	216	46.6	2780	1000 D
1 x 150 RM	0.206	436	345	22.3	745	500 D, 1000 D
4 x 150 SE	0.206	275	246	47.7	3120	500 D
4 x 150 SM	0.206	275	246	50.4	3260	500 D
1 x 185 RM	0.164	496	401	24.6	925	500 D, 1000 D
4 x 185 SE	0.164	313	285	52.7	4170	500 D
4 x 185 SM	0.164	313	285	54.0	4230	500 D
1 x 240 RM	0.125	578	479	27.5	1210	500 D, 1000 D
4 x 240 SE	0.125	364	338	58.2	5150	500 D
4 x 240 SM	0.125	364	338	60.3	5380	500 D
1 x 300 RM	0.1	656	555	30.6	1440	500 D, 1000 D
1 x 400 RM	0.0778	756	653	33.2	1850	500 D, 1000 D
1 x 500 RM	0.0605	873	772	37.7	2190	500 D, 1000 D
1 x 630 RM	0.0469	1011	915	42.9	2700	500 D, 1000 D

Technical changes reserved. All figures are therefore without guarantee.